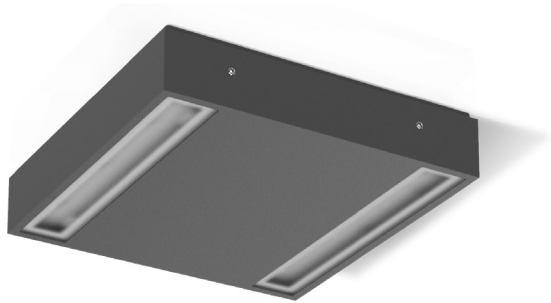


MIMIK 20 CEILING



Ceiling- and wall- mount series. Fixtures consist of:

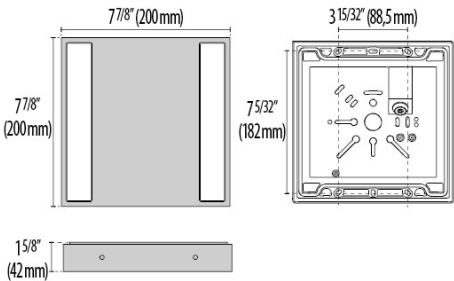
- Multi-step powder-coat painting process, optimized against UV rays and corrosion.
- Copper-free precision die-cast aluminum housing and mounting plate.
- Micro-prismatic patterned, flat, tempered silk-screened soda-lime glass diffuser (FLAT versions).
- Custom molded, anti-aging gasket(s).
- Stainless steel external hardware.
- Custom MCPCB utilized to maximize heat dissipation and promote a long LED life.

- 100° x 100° beam angle (S/EW).
- Input voltage: 120-277 V (50 / 60 Hz), integral 0-10 V dimming driver.
- Consult factory for dimming options, custom finishes (please specify RAL color), and non-cataloged CCT (Kelvin) options including static colors.
- Product meets Buy American Act requirements within ARRA.
- 5-year warranty.
- Marine Grade finish.
- Suitable for Natatorium applications.



FINISHES

- AN-96 / Iron gray / Textured
- GR-94 / Aluminum metallic / Textured
- WH-87 / White / Textured
- BK-81 / Black / Textured
- RB-10 / Iron rust / Textured



MIMIK
20 CEILING

Scan here
for installation
instructions



Lumen Output	27K	3K	35K	4K	5K
Mimik 20 Ceiling	1844	1869	1893	1918	1942

24W Max Wattage

Order Guide - Mimik 20 Ceiling



Order code example

M20C-24-AM-3K-120-NA

M20C

Wattage	Finish	Kelvin	Voltage	Controls	Accessories
24W 24 watt (max)	AM Aluminum Metallic	27K 2700k	UNV 120-277V	NA Non Dimming	REM Remote Mounted Emergency Battery Back-Up
XX Specify Wattage Must be below max	IG Iron Gray	3K 3000k		0-10V 0-10V Dimming	
	IR Iron Rust	35K 3500k		ELV ELV Dimming	CON2 (single-gang j-box, adaptor plate and 1/2" knockouts)
	BK Textured Black	4K 4000k			CON4 (single-gang j-box, adaptor plate and 3/4" knockouts)
	WH Textured White	5K 5000k			
	CC Custom Color	65K 6500k			
		RED Static Red			
		GRN Static Green			
		BLU Static Blue			
		AMB Static Amber			